



No. 3

OUTDOOR  
FIELD GUIDE

**DOTHAN**

ALABAMA



VISIT  DOTHAN



## TABLE OF CONTENTS

FACTS AT-A-GLANCE	02
WHAT TO PACK	05
SPORTS FACILITIES	07
PHOTO WORTHY SPOTS	10
OUTDOOR ATTRACTIONS	15
DAY TRIPS	20
BIKING & HIKING	22
GOLFING	27
KAYAKING & TUBING	28
HUNTING & FISHING	30

## MORE THAN PINES & PEANUTS

Nestled in the southeastern United States, Dothan, Alabama, stands as a vibrant testament to the natural beauty the Deep South has to offer. Known as the "Peanut Capital of the World" due to its significant peanut farming industry, this charming city is more than just a hub for agriculture. Dothan has embraced its picturesque landscape and year-round temperate climate to become a true haven for outdoor enthusiasts. With an array of parks, trails, and recreational opportunities, Dothan has firmly established itself as an outdoor-centric community, where residents and visitors alike can revel in the great outdoors.



---

## LOCAL & STATE FACTS AT-A-GLANCE

---



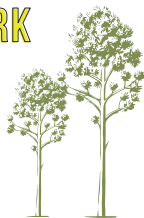
Considered one of the most biologically diverse states in the US- Alabama harbors 64 types of terrestrial ecosystems, including 25 forests and woodlands, 11 wetlands, and 7 glades and prairies. Subsequently, our state ranks #5 in overall plant diversity in the U.S.



\*THE MOST OF ANY STATE  
\*\*WOW THAT'S CRAY!



**DOTHAN IS  
HOME TO  
750+ ACRES  
OF PARK  
LAND**



Forest covers 23 million acres, almost 70% of the state.

---



## CLIMATE

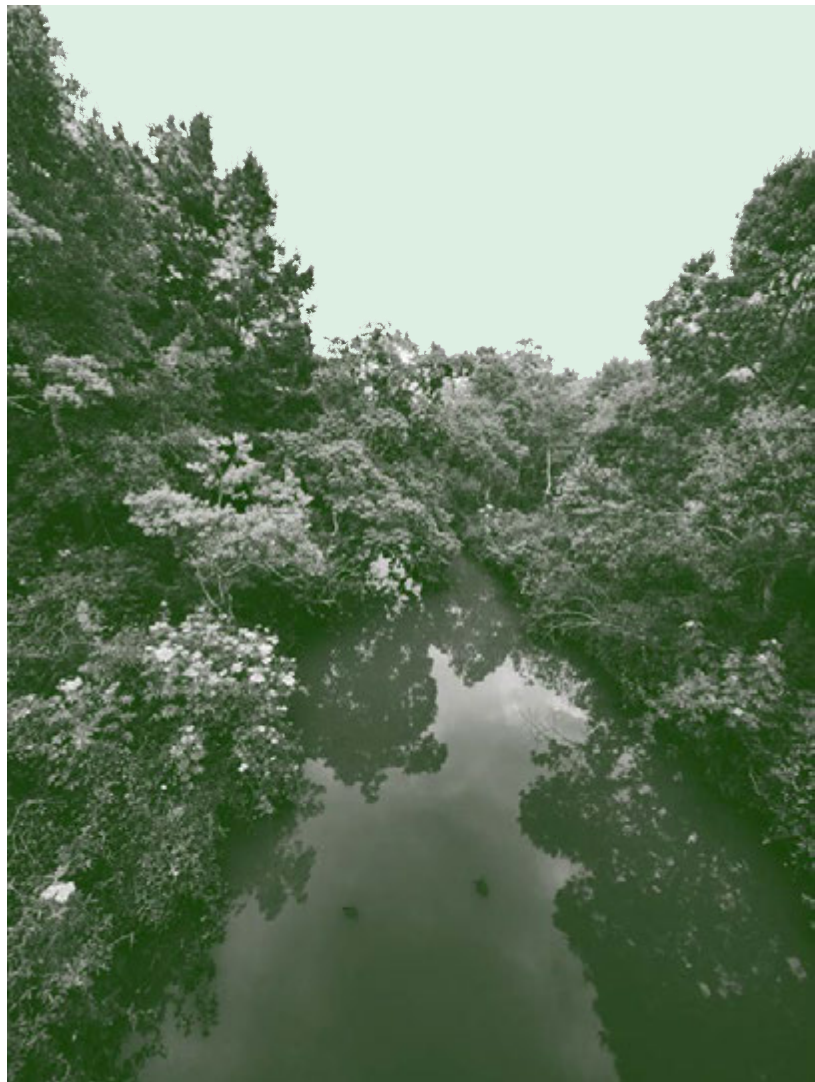
With a subtropical climate, the city experiences four distinct seasons, though the winters are milder than those in more northern regions.

Summers in Dothan are hot and humid, with temperatures often reaching the high 80s to low 90s and frequent afternoon thunderstorms due to the Gulf of Mexico's influence.

Winters are relatively mild, with daytime temps typically ranging from the mid-50s to low 60s.

Spring and fall bring comfortable temperatures and lower humidity, making them ideal for outdoor activities. Rainfall is fairly evenly distributed through the year, contributing to the city's lush, green landscapes.

Overall, Dothan's annual climate offers a diverse range of weather conditions, making it a great place for those who appreciate seasonal variety and enjoy outdoor pursuits throughout the year.





## WHAT TO PACK

THIS GUIDE	✓
SUNSCREEN	
WATER	
TRAIL MAP	
CELLPHONE	
SNACKS	
CAMERA	
BUG SPRAY	
HAT	
WALKING SHOES	
EXTRA SOCKS	





# 125 TOTAL SPORTS FACILITIES



MORE INFO

ARCHERY.....	<b>01</b>	RANGE
BASEBALL.....	<b>25</b>	FIELDS
BMX TRACK.....	<b>01</b>	TRACK
DISC GOLF.....	<b>02</b>	COURSES
FLAG FOOTBALL.....	<b>10</b>	FIELDS
FOOTBALL.....	<b>03</b>	FIELDS
GOLF.....	<b>04</b>	COURSES
PICKLEBALL.....	<b>06</b>	COURTS
SOCCER.....	<b>11</b>	FIELDS
SOFTBALL.....	<b>14</b>	FIELDS
SWIMMING.....	<b>01</b>	POOL
TENNIS.....	<b>47</b>	COURTS



**FIG. A** THE COUNTRY'S FIRST NFL FLAG FOOTBALL FIELD IN A STATE WITH NO NFL TEAM PRESENCE. ALSO WAS HOST OF THE INAGURAL AWARD WINNING NFL FLAG SUPER REGIONAL TOURNAMENT **FIG. B** 1,147 FT. DOWNHILL TRACK WITH A CROSSOVER AND ALL PAVED TURNS- MAKING IT ONE OF THE FASTEST IN THE STATE.



**FIG. A - GRANDVIEW FIELD**



**FIG. B - DOTHAN BMX TRACK**

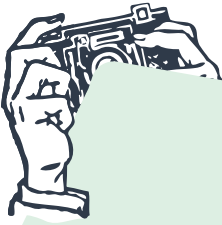


FIG. C - JAMES OATES PARK



FIG. D - WESTGATE TENNIS CENTER

FIG. C AN 87-ACRE PARK FEATURING TWO 6-FIELD COMPLEXES. EACH FIELD FEATURES ALL NEW ASTRO-TURF INFIELDS. THE COMPLEX ALSO FEATURES A LIGHTED WALKING TRAIL AND 2 PLAYGROUND AREAS. FIG. D PREMIER FACILITY SANCTIONED BY USTA AND RECIPIENT OF NUMEROUS FACILITY AWARDS, FEATURING 20 HAR-TRU COURTS.



## PHOTO-WORTHY SPOTS



DOTHAN AREA BOTANICAL GARDENS  
"WINGS OF WONDER" BUTTERFLY HOUSE



LANDMARK PARK



FOSTER STREET DOWNTOWN



DOTHAN NURSERIES



NATIONAL PEANUT FESTIVAL GIANT PEANUT



DOWNTOWN MURAL TRAIL



VISIT DOTHAN'S GOLDEN PEANUT



FOREVER WILD TRAILS



THE THIRSTY PIG



KBC RESTAURANT





## OUTDOOR ATTRACTIONS

The Dothan Area Botanical Gardens is an oasis that serves as a jewel of natural beauty. Spread across 50 acres of meticulously landscaped grounds, this botanical haven captivates visitors with its diverse collection of plant species and exquisite gardens. It offers a delightful escape from the hustle and bustle of daily life, where individuals and families can immerse themselves in nature.



### DOTHAN AREA BOTANICAL GARDENS

5130 HEADLAND AVENUE  
DOTHAN, ALABAMA 36303



The gardens feature a wide array of themed areas, including the enchanting Rose Garden, the vibrant Camellia Garden, and the tranquil Japanese Garden, among others. These curated spaces offer leisurely strolls, educational exploration, and photography, making them a cherished destination for both locals and tourists seeking inspiration. Additionally, the gardens host educational programs, events, and activities, a testament to Dothan's commitment to celebrating the great outdoors.

## OUTDOOR ATTRACTIONS

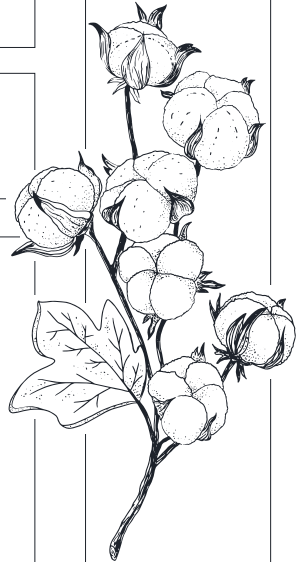
Landmark Park is a destination that encapsulates the region's rich history and natural heritage. Covering over 150 acres, this living history museum and outdoor park offers visitors an opportunity to step back in time and immerse themselves in the cultural and agricultural traditions of the Wiregrass region. It features an impressive collection of historic buildings, including a fully furnished 1890s farmstead, drugstore, and schoolhouse, all carefully preserved to provide a vivid glimpse into the past.

### LANDMARK PARK

430 LANDMARK DRIVE • DOTHAN, AL 36303



Nature enthusiasts will also appreciate the park's walking & birding trails, wildlife exhibits, and picnic areas, making it an ideal spot for a day of outdoor exploration. With engaging educational programs, special events, and a deep commitment to preserving the area's heritage, Landmark Park stands as a testament to the enduring legacy of Dothan and the cultural tapestry of Alabama.







## OUTDOOR ATTRACTIONS

Forever Wild is a recreational gem that epitomizes the city's commitment to outdoor adventures. This multi-use trail system, which spans approximately 10 miles, winds its way through lush woodlands, meandering along the banks of scenic bodies of water and through pristine wilderness areas. It's a haven for hikers, bikers, and nature enthusiasts alike, offering a variety of terrain to explore.



### FOREVER WILD TRAIL

384 NARCISSE DRIVE  
DOTHAN, ALABAMA 36305

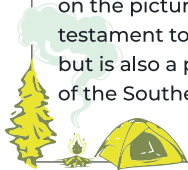
With well-maintained paths and scenic overlooks, the Forever Wild Trail provides a tranquil escape from urban life, allowing residents and visitors to connect with the great outdoors. Whether it's a leisurely stroll, an invigorating jog, or an exhilarating mountain biking experience, this trail showcases the natural beauty of Dothan and provides a space for both recreation and reflection, making it a cherished destination for those who seek to enjoy the beauty of Alabama's great outdoors.



## DOTHAN DAYTRIPS: A COLLECTION OF QUICK GETAWAYS

Whether it's exploring caverns or ancient earthworks, these brief adventures provide a refreshing break, allowing you to recharge without extensive planning or extended time commitments.

Kolomoki Mounds, located in Blakely, Georgia, stands as one of the most significant archaeological sites in the southeastern United States. This park is home to a complex of prehistoric Native American mounds, with some dating back over 1,800 years. The mounds offer a glimpse into the region's indigenous history. Visitors can tour ancient earthworks, explore a museum showcasing artifacts, and even camp on the picturesque grounds. This archaeological treasure is not only a testament to the rich heritage of the cultures that once thrived here but is also a place of wonder for those interested in the ancient history of the Southeast area.



### KOLOMOKI MOUNDS

46 MIN. DRIVE

Providence Canyon, referred to as "Georgia's Little Grand Canyon," is a breathtaking natural wonder. This formation was carved over centuries due to poor farming practices, resulting in a network of deep, colorful canyons and vibrant sedimentary rock formations. The park offers hiking trails that wind through the canyons, allowing for exploration and incredible photo opportunities. The Canyon serves as a reminder of the consequences of unsustainable land use practices, while offering a unique and visually striking natural attraction.



### PROVIDENCE CANYON

1.5 HR. DRIVE

Falling Waters State Park, in Chipley, Florida, is a natural wonder with its unique geological features and lush surroundings. At the heart of this park is the Falling Waters Sink, a 100-foot deep cylindrical pit into which a waterfall plummets. The park's terrain offers hiking trails that wind through a diverse landscape of sandhills, pine forests, and hardwood hammocks, providing ample opportunities for exploration and wildlife observation. Visitors can also enjoy picnic areas, fishing, and even camping. Falling Waters State Park stands as a captivating testament to Florida's geological diversity.



## FALLING WATERS STATE PARK

46 MIN. DRIVE

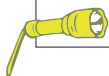
Blue Springs State Park in Clio, Alabama, is a hidden gem nestled in the woodlands of southeastern Alabama. This park is known for its crystal-clear spring, which gushes forth an astonishing 3,600 gallons of water per minute. The spring with its brilliant blue waters, provides a refreshing oasis from the summer heat. Additionally, Blue Springs offers hiking trails, camping, and an 18-hole golf course, making it a versatile destination for outdoor enthusiasts. With its inviting waters and lush surroundings, Blue Springs State Park offers an ideal setting for relaxation and outdoor adventure.



## BLUE SPRINGS STATE PARK

45 MIN. DRIVE

Florida Caverns State Park, in Marianna, Florida, is a subterranean wonderland filled with underground marvels. This unique state park offers a unique peek into its system of limestone caves, adorned with stalactites and stalagmites. Guided cave tours provide a glimpse into the geologic history of the area. Above ground, visitors can enjoy hiking trails, picnic areas, and opportunities for wildlife observation. The park's diverse natural beauty and subterranean treasures make it an exceptional destination for those seeking both outdoor adventure and a rare glimpse into the hidden world beneath Florida's surface.



## FLORIDA CAVERNS STATE PARK

48 MIN. DRIVE



Venture beyond the well-trodden tourist paths, uncover hidden treasures, and immerse yourself in the local culture and environment. Set your own pace and soak in the sights at leisure. The personal connections formed with nature, locals, and fellow travelers through shared outdoor experiences often result in cherished memories and a unique perspective of the destination. Enhance your physical health and foster a deeper connection with the world you're exploring.





TRAIL MAPS

# LOCAL TRAILS AT-A-GLANCE

FOREVER WILD.....	<b>14 MILES UNPAVED</b>
WESTGATE PARK TRAIL.....	<b>3.5 MILES UNPAVED</b>
EASTGATE PARK LAKE TRAIL.....	<b>1.4 MILES UNPAVED</b>
ACOM FARMER TRAIL.....	<b>3.3 MILES UNPAVED</b>
TROY DOTHAN TRAIL LOOP.....	<b>4.9 MILES UNPAVED</b>
JAMES OATES PARK.....	<b>1.5 MILES PAVED</b>
LANDMARK PARK TRAIL.....	<b>2 MILES UNPAVED</b>
WALTON PARK TRAIL.....	<b>0.6 MILES UNPAVED</b>
DOTHAN AREA BOTANICAL GARDEN TRAIL.....	<b>0.75 MILES UNPAVED</b>
KIWANIS PARK & TRAIL.....	<b>0.5 MILES PAVED</b>

## FLORA + FAUNA



FIG. 1

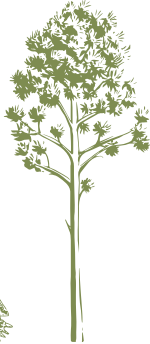


FIG. 2



FIG. 3



FIG. 4



FIG. 5



FIG. 6



FIG. 7



FIG. 8

FIG. 1 Eastern Box Turtle FIG. 2 Longleaf Pine FIG. 3 Armadillo  
FIG. 4 Black-eyed Susan FIG. 5 Red Spider Lily  
FIG. 6 Fox Squirrel FIG. 7 Goldenrod FIG. 8 Eastern Wild Turkey

## TRAIL ETIQUETTE CHECK LIST



LEAVE NO TRACE	
TIME IT RIGHT- START EARLY	
DRESS APPROPRIATELY	
TELL SOMEONE YOUR LOCATION	
TAKE YOUR TIME	
WATCH YOUR FEET	
STAY ON THE TRAIL	
YIELD TO BIKES, HORSES & OTHER HIKERS	
USE HEADPHONES FOR MUSIC	
PACK A HAMMOCK & FIND A GREAT SPOT!	





## FOR THE LOVE OF GOLF

Dothan is home to well-manicured golf courses & ranges that showcase the beauty of this region. From seasoned golfers to beginners, our golfing scene offers a range of options for all.

### ROBERT TRENT JONES GOLF TRAIL AT HIGHLAND OAKS



THREE 9-HOLE CHAMPIONSHIP COURSES  
9-HOLE SHORT COURSE  
DRIVING RANGE & PUTTING GREENS

### DOTHAN NATIONAL GOLF CLUB



18 HOLE COURSE  
DRIVING RANGE

### DOTHAN COUNTRY CLUB (MEMBERSHIP REQUIRED)



18 HOLE COURSE  
DRIVING RANGE

### DOTHAN DRIVING RANGE



LIGHTED RANGE WITH MATS & GRASS  
10 TOP TRACER BAYS

### ACE ON 9



INDOOR TRACKMAN GOLF SIMULATION  
FULL BAR AVAILABLE



## KAYAKING + TUBING

With its numerous waterways, including the Choctawhatchee River and various local lakes, Dothan provides ample opportunities for kayaking adventures. Paddlers can explore calm, meandering rivers, and peaceful lakes while immersing themselves in the region's lush landscapes.

Kayaking is not only a great way to enjoy the tranquility of the outdoors but also to observe local wildlife and appreciate the diverse ecosystems that thrive in these waterways.

Whether you're a novice or an experienced kayaker, Dothan's water resources cater to a wide range of skill levels, making it a perfect destination for those seeking an idyllic and peaceful paddling experience in the heart of Alabama.



## FLOAT TRIPS + TIPS

Bear Paw Adventures

Omusee Creek

Chattahoochee River

Lake Eufaula

White Oak Creek

Merritt's Mill

Holmes Creek

Little Choctawhatchee

**No. 1** Paddle with a buddy

**No. 2** Have a float plan

**No. 3** Know your limit

**No. 4** Ask before you go

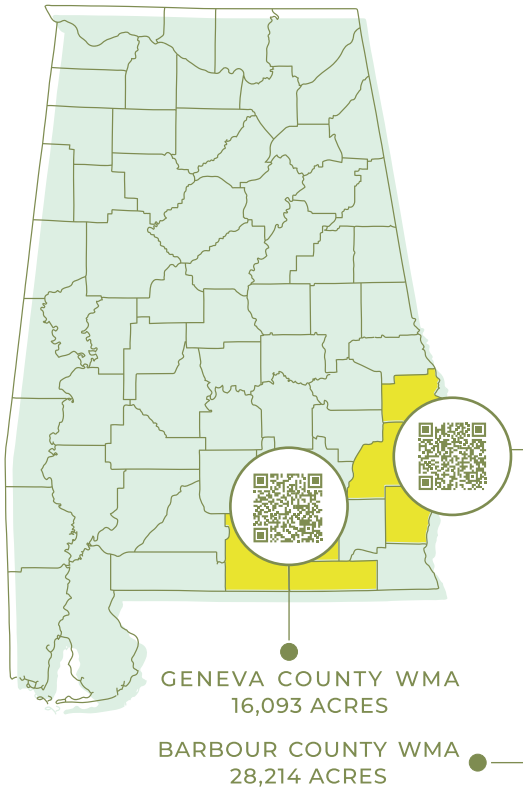
**No. 5** Don't skimp on a PFD

**No. 6** Bring a whistle

**No. 7** Be mindful of weather

**No. 8** Respect the wildlife

# HUNTING



Both Geneva & Barbour County WMA's encompass thousands of acres that offer not only hunting but also fishing, trail riding, hiking, and primitive camping. Exploring these areas offers both hunters and nature lovers the chance to appreciate the outdoors, whether it's tracking game or simply enjoying being outside.





Eastgate Park is Dothan's hidden gem for public fishing. Two fish ponds stocked with catfish, bream, and bass sit on 200 acres of beautifully manicured green recreation space. Fishing not your thing? The park also offers wooded walking trails, an 18-hole disc golf course, 15-80 yard archery range, a fenced dog park, and much more. Grab your tackle box and fishing license and plan your next fishing adventure with Eastgate in mind. Also check for upcoming events, such as Youth Fishing Day and Moonlight Fishing for a specialized experience!

### **EASTGATE PARK**

2049 SANITARY DAIRY ROAD  
ASHFORD, ALABAMA 36312

DOCUMENT

YOUR

ADVENTURE



**VISIT DOTHAN**